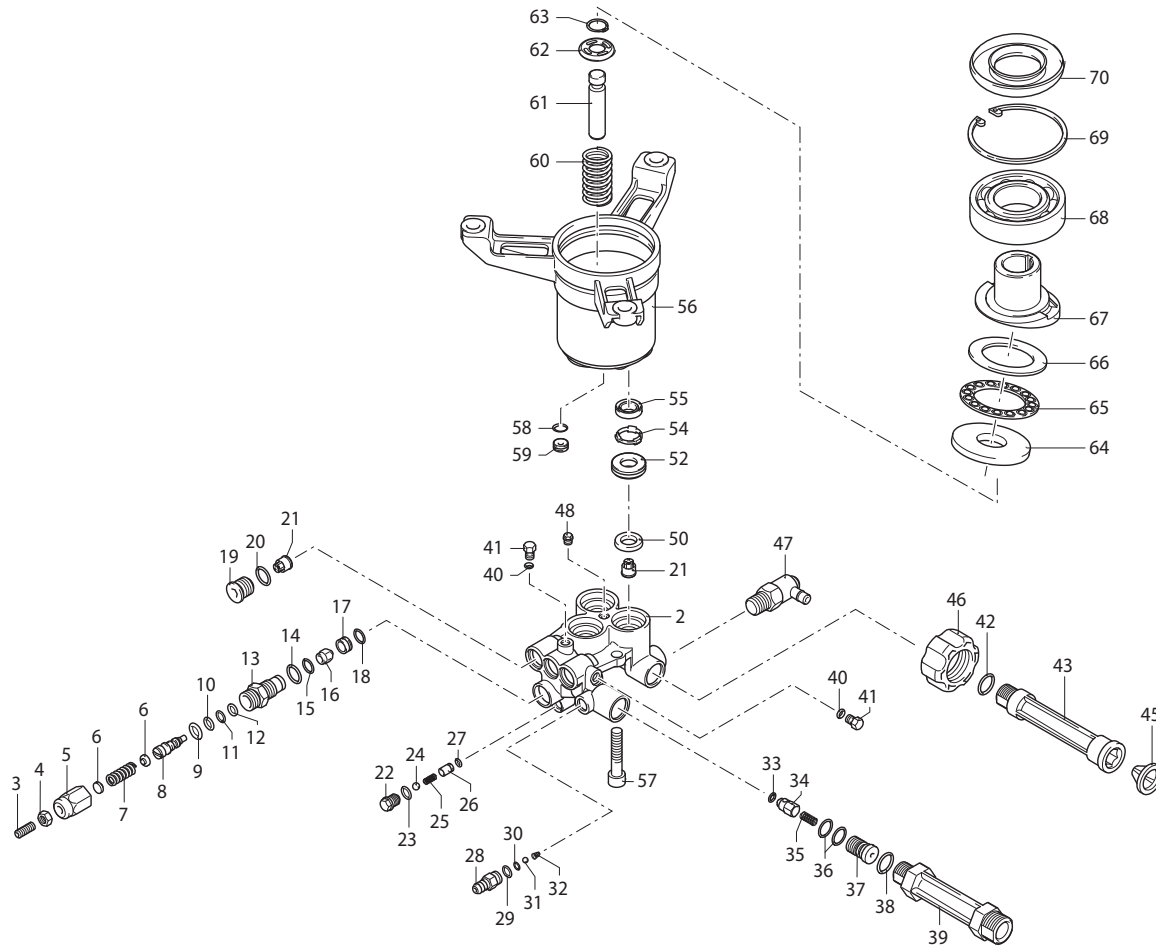
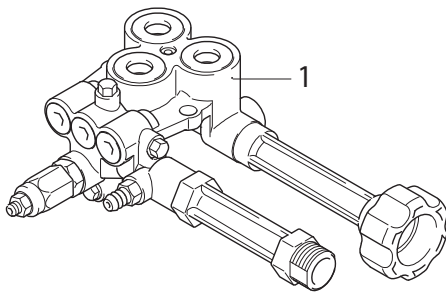


RQW 3400 RPM - Schematic and Parts



Complete Pump Head



RWQ 3400 RPM Parts and Kits

Pos	Code	Description	Qty	Note
1	3729205	Complete Pump Head Ø12	1	
2	3721150	Blank Pump Head	1	
3	392840	Set Screw M6x16	1	
4	1060120	Nut M6	1	
5	3720681	Unloader Barrel	1	
6	3720660	Spring Plate	2	
7	3721020	Unloader Spring	1	
8	3720540	Unloader Piston	1	
9	3720600	Fiber Ring	1	
10	660190	O-ring Ø6.07x1.78	1	
11	3720560	O-ring Ø4.5x1.5	1	
12	3720580	Fiber Ring	1	
13	3720620	Unloader Piston Guide	1	
14	394280	O-ring Ø12.42x1.78	1	
15	3720570	O-ring Ø9x1.5	1	
16	3720520	Unloader Jet	1	
17	3721060	Unloader Seat	1	
18	1470210	O-ring Ø9x1	1	
19	3720441	Valve Cap	3	
20	770140	O-ring Ø11.11x1.8	3	
21	2849053	Complete valve	6	
22	3720730	Plug	1	
23	1682800	O-ring Ø6x1.5	1	
24	1982240	Ball	1	
25	3720760	Spring	1	
26	3720740	Seat	1	
27	3720750	O-ring Ø4x1	1	
28	3700240	Hose Barb Ø8	1	(35.4 in./lbs)
29	3700250	O-ring Ø8x1.1	1	
30	480480	O-ring Ø4.48x1.78	1	
31	1250280	Ball	1	
32	1560520	Spring	1	
33	1460431	O-ring Ø4x2.5	1	
34	3700220	Jet	1	
35	3700210	Spring	1	
36	800560	O-ring Ø8.73x1.78	2	
37	3700200	Shutter	1	
38	2840890	O-ring Ø14x2	1	
39	2840260	Outlet Tube	1	
40	3201760	O-ring Ø4x1.5	2	
41	3720720	Plug	2	
42	2840890	O-ring Ø14x2	1	
43	2840250	Inlet Tube	1	
45	7369	Filter	1	
46	2841220	Fitting 3/4" NH	1	
47	TPP140-1/4A	Thermal Relief Valve	1	
48	2841430	Plug	1	
50	2200141	Water seal Ø12	3	
52	3721140	Bushing	3	

Pos	Code	Description	Qty	Note
54	3720400	Spacer	3	
55	1683500	Oil seal	3	
56	3720800	Pump body	1	NON-SX
57	800220	Head Bolt TCEI M8x45	3	
58	3720750	O-ring Ø4x1	1	
59	3721070	Plug	1	
60	3720380	Spring	3	
61	3720340	Piston Ø12	3	
62	3720360	Piston Lock	3	
63	3720390	Retainer Ring	3	
64	1980130	Thrust Washer	1	
65	1980250	Bearing	1	
66	1980240	Thrust Washer	1	
67	2840690	Wobble Plate 5 ID Stpm 12°	1	
68	161060	Bearing	1	
69	161050	Retainer Ring Øi 72	1	
70	2840310	Shaft Oil Seal	1	

Pump Oil Part Number: AR64545 (4.5oz)
 Pump Oil Capacity 2.29 oz, QTY 1
 Prefilled with Oil from the Factory.
 The Oil in the pump is good for the life of the of the pump. Oil does not need to be changed.
 Tightening torque (Tolerance + 0 ÷ -10%)
 SX - 180° Rotated Shaft Configuration

OPTIONAL PARTS/KITS

Pos	Code	Description	Qty	Note
	42959	O-ring Kit	1	Pos: 10, 11, 14, 15, 18, 20, 21, 29, 30, 33, 36, 28 40, 42, 59,

LEGEND

Symbol	Material	Description
○	-	RQW22G26D Ø12

Valve Kit 42955

Pos.	Qty
21	6

Piston Kit 42956

Pos.	Qty
61	3

Water Seal Kit 42958

Pos.	Qty
50	3

Oil Seal Kit 42957

Pos.	Qty
55	3
70	1

