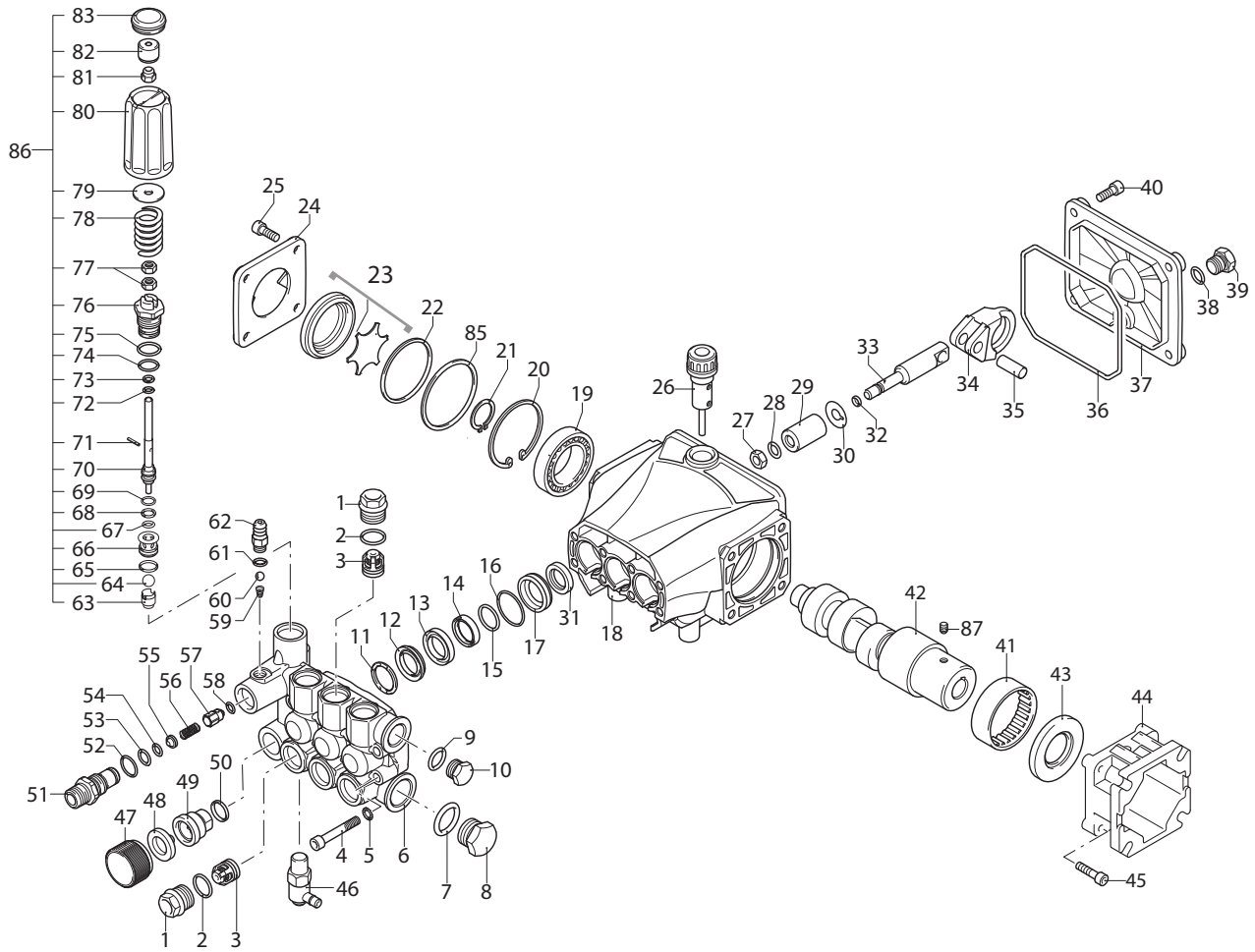
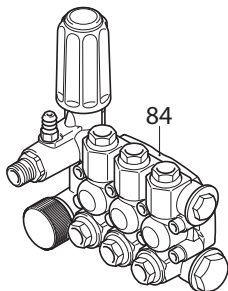


RCVU- 3400RPM - Parts Schematic



Complete Pump Head



RCVU - 3400 RPM - Parts

Pos	Code	Description	Qty	Note
1	3200110	Valve Cap	6	(216 in/lbs)
2	1200690	O-Ring Ø 15.6x1.78	6	
3	2769050	Complete Valve	6	
4	800410	Head Bolt M6x40	8	
5	1381550	Lock Washer	8	
6	3200930	Blank Head	1	
7	180101	O-Ring Ø 17.5x2	1	
8	820361	Plug 1/2" G	1	(354 in/lbs)
9	740290	O-Ring Ø 14x1.78	1	
10	1989600	Plug 3/8" G Brass, w/O-ring	1	(221 in/lbs)
11	2760220	Support Ring 15mm	3	
12	1342761	High Pressure Seal	3	
13	3200160	Front Piston Guide Ø 15	3	
14	3200690	Low Pressure Seal	3	
15	3200700	Fiber Ring	3	
16	770590	O-Ring Ø 21.95x1.78	3	
17	3200150	Rear Piston Guide Ø 15	3	
18	3200010	Pump Body	1	
19	1780490	Bearing	1	
20	1260790	Retainer Ring Ø i52	1	
21	1780550	Retainer Ring Ø e 20	1	
22	395081	O-Ring Ø 47.30x2.62	1	
23	3209615	Oil Indicator	1	
24	3200070	Side Cover	1	
25	1200430	Bolt M6x16	4	(92 in/lbs)
26	3201890	Oil Cap (Vented Dipstick)	1	
27	1260110	Nut M8	3	
28	1260100	Washer 8x13x0.50	3	
29	1260120	Piston Ø 15	3	
30	1260091	Washer (slinger)	3	
31	1260460	Oil Seal	3	
32	480480	O-Ring Ø 4.48x1.78	3	
33	3200060	Piston Rod	3	
34	3200040	Connecting Rod	3	
35	1780050	Connecting Rod Pin	3	
36	2760280	O-Ring Ø 101.27x2.62	1	
37	3200030	Rear Cover	1	
38	820510	O-Ring Ø 10.82x1.78	1	
39	880581	Plug 1/4" G	1	(177 in/lbs)
40	3200220	Bolt TCEI 6x16	4	(71 in/lbs)
41	1321190	Bearing	1	
42	3200350	Hollow Shaft 8 ID Stamp	1	▼
	3201170	Hollow Shaft 9 ID Stamp	1	○
	3200340	Hollow Shaft 7 ID Stamp	1	■
43	480671	Shaft Oil Seal	1	
44	1579	F7 Flange Gas Engine	1	
45	1200430	Bolt M6x16	4	(92 in/lbs)
46	TPP140-1/4A	Thermal Relief Valve	1	
47	2840270	Inlet Fitting 3/4" NH Brass	1	
48	7369	Filter	1	
49	2841230	Fitting Alum.	1	(221 in/lbs)
50	2840890	O-Ring Ø 14x2	1	
51	2760230	Discharge Fitting 3/8" G	1	(354 in/lbs)
52	394280	O-Ring Ø 12.42x1.78	1	

Pos	Code	Description	Qty	Note
53	2760270	O-Ring Ø 12x1	1	
54	1470210	O-Ring Ø 9x1	1	
55	2760120	Orifice Ø 2.0	1	
56	2760200	Spring	1	
57	2760130	Jet	1	
58	1460430	O-Ring Ø 4x2.5	1	
59	1560520	Spring	1	
60	1250280	Ball	1	
61	480480	O-Ring Ø 4.48x1.78	1	
62	1982520	Hose Barb Ø 8	1	(35 in/lbs)
63	3200560	Guide	1	
64	3200590	Ball	1	
65	770140	O-Ring Ø 11.11x1.78	1	
66	3200550	Seat	1	
67	660191	O-Ring Ø 6.07x1.78	1	
68	1080401	Fiber Ring	1	
69	480560	O-Ring Ø 6.75x1.78	1	
70	3200510	Unloader Piston	1	
71	3201820	Pin 5tl M2x12m	1	
72	770090	O-Ring Ø 5.28x1.78	1	
73	3200540	Fiber Ring	1	
74	394280	O-Ring Ø 12.42x1.78	1	
75	1200690	O-Ring Ø 15.6x1.78	1	
76	3200530	Unloader Piston Guide	1	
77	1980300	Nut M6	2	
78	3201340	Unloader Spring	1	
79	3200600	Washer	1	
80	3200480	Unloader Knob	1	
81	3000170	Nut M6	1	
82	3200520	Bushing	1	
83	3200500	Unloader Cap	1	
84	42717	Complete Pump Head	1	
85	3201860	Support Ring Ø 51.8x0.5	1	
86	42712	Complete Unloader	1	
87	820440	Set Screw M6x16	1	

Pump Oil Part Number: AR64516 (16 oz)
 Pump Oil Capacity 9.81 oz, QTY 1
 Pumps are Prefilled with Oil from the Factory.
 Change oil every 3-5 months or every 500 hours of operation.
 Tightening torque (Tolerance + 0 ÷ -10%)

OPTIONAL PARTS/KITS

Pos	Code	Description	Qty	Note
1	3201430	Tapped Valve Cap 1/8" threaded	1	(216 in/lbs)
	2191	Support Ring Kit	1	Pos 11
46	2760260	Plug 1/4" G	1	
	42470	O-Ring Kit	1	Pos 2, 7, 9, 16, 22, 32, 36, 38

LEGEND

Symbol	Material	Description	
▼	-	RCVU3G25D, RCVU3G27D	Ø 15
○	-	RCVU25G27D	Ø 15
■	-	RCVU35G25D	Ø 15

Valve Kit 2186

Pos.	Qty
3	6

Piston Kit 42475

Pos.	Qty
29	3

Water Seal Kit 42476

Pos.	Qty
12	3
14	3
15	3
16	3

Oil Seal Kit 42470

Pos.	Qty
31	3
43	1