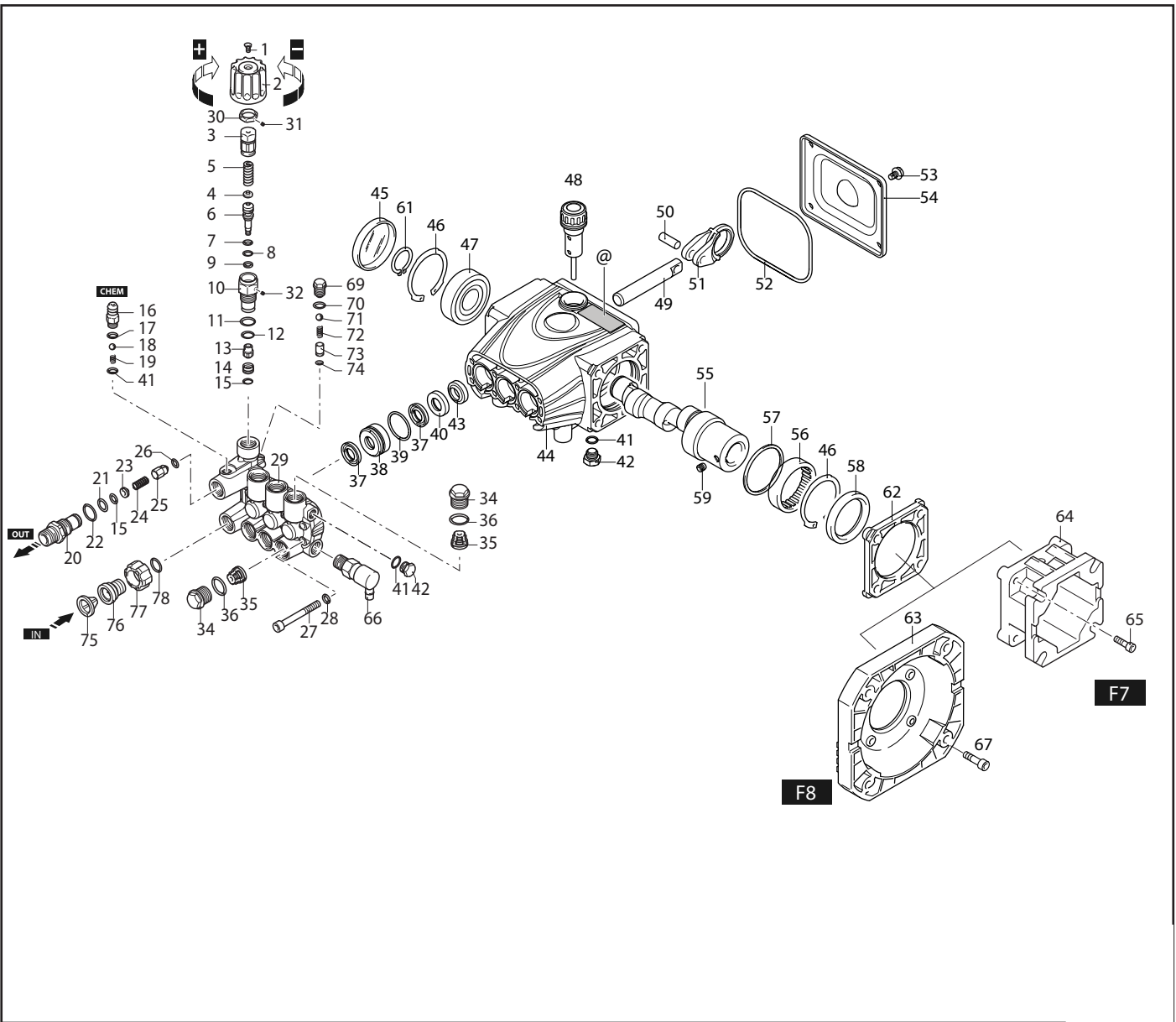
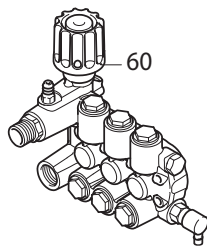


# JRV - 3400 RPM



## Complete Pump Head



# JRV - 3400 Parts & Kits

Pos	Code	Description	Qty	Note
1	3800250	Screw M4x8 (26.5 in/lbs)	1	
2	3800180	Unloader Knob	1	
3	3800190	Adjusting Cover	1	
4	1980220	Spring Plate	1	
5	2760410	Unloader Spring	1	
6	4140170	Unloader Piston	1	
7	2260100	O-Ring Ø 6.02x2.62	1	
8	660190	O-Ring Ø 6.07x1.78	1	
9	2760210	Fiber Ring	1	
10	3800210	Unloader Piston Guide (132.7 in/lbs)	1	
11	740290	O-Ring Ø 14x1.78	1	
12	820510	O-Ring Ø 10.82x1.78	1	
13	3800230	Unloader Jet (26.5 in/lbs)	1	
14	2841080	Unloader Seat	1	
15	1470210	O-Ring Ø 9x1	2	
16	3700240	Hose Barb Ø 8	1	
17	480480	O-Ring Ø 4.48x1.78	1	
18	1250280	Ball	1	
19	1560520	Spring	1	
20	2760230	Discharge Fitting 3/8" G, (354 in/lbs)	1	
21	2760270	O-Ring Ø 12x1	1	
22	394280	O-Ring Ø 12.42x1.78	1	
23	2760120	Orifice Ø 2.0	1	
24	2760200	Spring	1	
25	2761511	Jet	1	
26	2101770	O-Ring Ø 4x2.5	1	
27	1345180	Head Bolt TCEI M5x40 (54.8 in/lbs)	8	
28	4140140	Washer	8	
29	4140020	Blank Head	1	
30	3800200	Nut M16x1	1	
31	3800240	Set Screw M4x4	1	
32	3800310	Set Screw M3x4	1	
34	2840130	Valve Cap Brass (221 in/lbs)	6	
35	2849050	Complete Valve Brass Seat	6	
36	2841520	O-Ring Ø 13.5x1.8	6	
37	2200141	Water Seal (High & Low)	6	
38	2840550	Front Piston Guide Ø 12	3	
39	770590	O-Ring Ø 21.95x1.78	3	
40	2841390	Rear Piston Guide Ø 12	3	
41	3700250	O-Ring Ø 8x1.1	2	
42	2841800	Plug (70.8 in/lbs)	2	
43	1683500	Oil Seal	3	
44	4140010	Pump Body	1	
45	4140150	Bearing Cap	1	
46	4140360	Retainer Ring Øi 47	2	
47	4140110	Bearing	1	
48	4140210	Oil Cap (Vented Dipstick)	1	
49	4140060	Piston Ø 12	3	
50	4140070	Connecting Rod Pin	3	

Pos	Code	Description	Qty	Note
51	4140080	Connecting Rod (Alum.)	3	
52	4140090	O-Ring	1	
53	4140270	Bolt TE 5x8	4	
54	4140030	Rear Cover	1	
55	4140260	Hollow Shaft Ø 5/8", 3 ID Stamp	1	○
	4140470	Hollow Shaft Ø 5/8", 2 ID Stamp	1	●
	4140390	Hollow Shaft Ø 3/4", 4 ID Stamp	1	▽
	4140290	Hollow Shaft Ø 3/4", 2 ID Stamp	1	□
56	4140240	Bearing	1	
57	4140190	Ring	1	
58	1981730	Shaft Oil Seal	1	
59	820440	Set Screw M6x6	1	
60	4149201	Complete Pump Head	1	
61	1780550	Retainer Ring Øe 20	1	
62	4140160	Adapter	1	
63	1584	F8 Flange Nema 56-C	1	
64	1578	F7 Flange	1	
65	1200430	Bolt TCEI M6x16 (88.51 in/lbs)	4	
66	TPP140-1/4A	Thermal Relief Valve	1	
67	1040370	Bolt M6x22 (92 in/lbs)	4	
69	3720730	Plug	1	
70	1682800	O-ring Ø 6x1.5	1	
71	1982240	Ball	1	
72	3720760	Spring	1	
73	3720740	Seat	1	
74	3720750	O-ring Ø 4x1	1	
75	7369	Filter	1	
76	2841230	Fitting Alum. (221 in/lbs)	1	
77	2841220	Fitting 3/4" NH (Plastic)	1	
78	2840890	O-ring Ø 14x2	1	

AR64516 Oil (16 Oz)- Capacity 5.43 oz, QTY 1  
 Prefilled with Oil from the Factory.  
 Change oil every 3-5 months or every 500 hours of operation.  
 Tightening torque (Tolerance + 0 ÷ -10%)

## OPTIONAL PARTS/KITS

Pos	Code	Description	Qty	Note
	43988	Unloader Kit	1	Pos 1,2,3,4,5,6,7,8,9,10,11, 12,13,14,15,30,31,32
	42725	Chemical Injector Kit	1	Pos 16,17,18,19,41
	43482	O-Ring Kit	1	Pos 7, 8, 9, 11, 12, 15, 17, 21, 22, 26, 36, 41
	43822	EZ Start Kit	1	Pos 69, 70, 71, 72, 73, 74
	2760260	Plug 1/4" G (141.6 in/lbs)	1	Pos 66

### Valve Kit 42123

Pos.	Qty
35	6

### Piston Kit 43479

Pos.	Qty
49	3

### Water Seal Kit 43481

Pos.	Qty
37	6
39	3

### Oil Seal Kit 43557

Pos.	Qty
43	3
45	1
52	1
58	1

## LEGEND

Symbol	Material	Description
○	-	JRV2G25E Ø 12
●	-	JRV3G20E Ø 12
▽	-	JRV25G30D Ø 12
□	-	JRV3G30D Ø 12